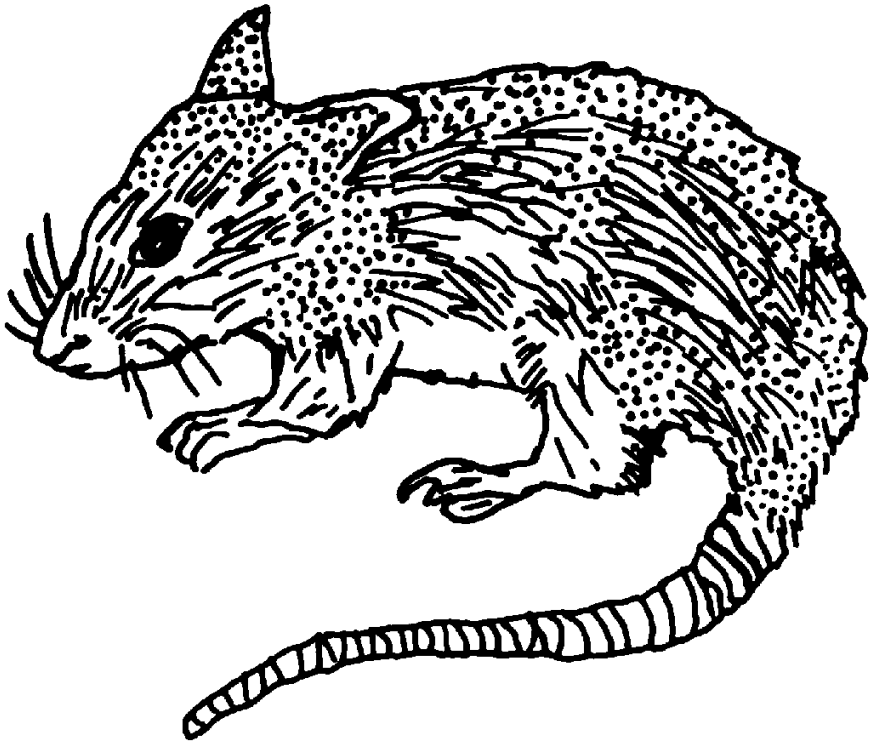


Utma mala sangchia



Mru

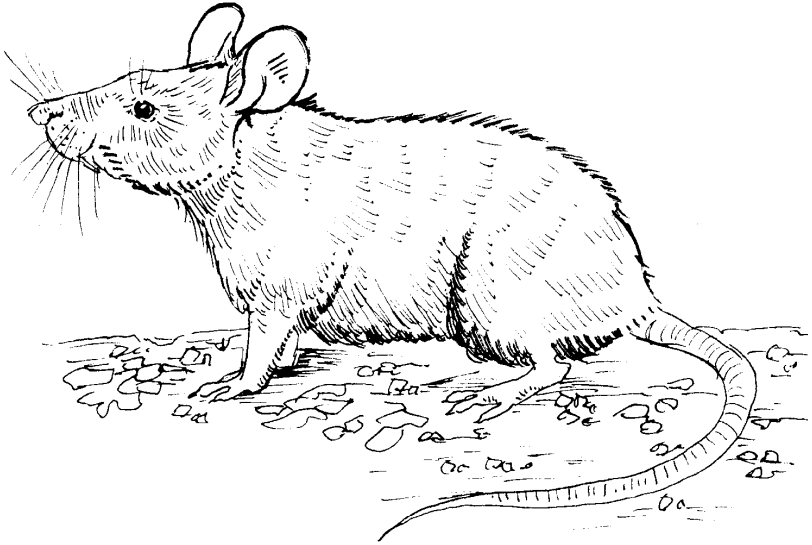
Utma mala sangchia

Mru



<http://creativecommons.org/licenses/by/4.0/>

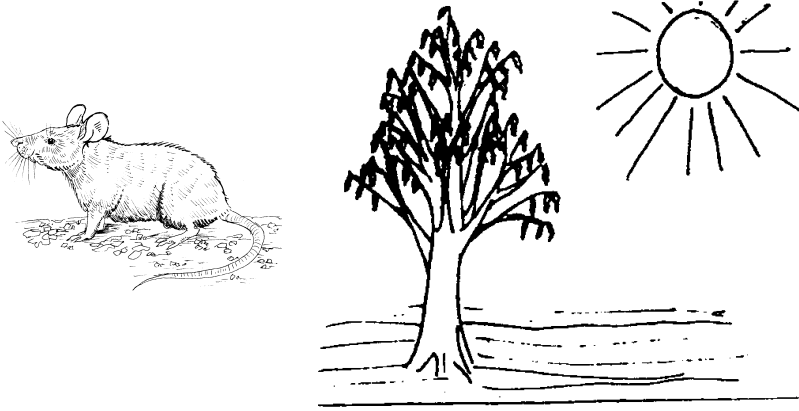
You are free to make commercial use of this work. You may adapt and add to this work. You must keep the copyright and credits for authors, illustrators, etc.



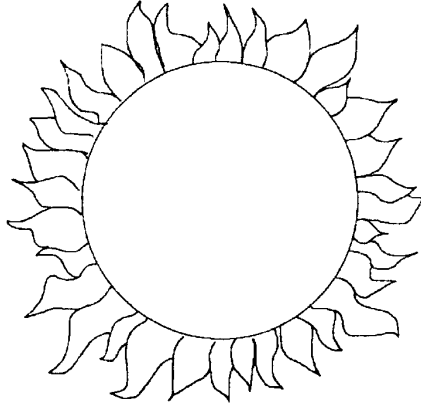
Mami dow achük lai khe kowh sangchia
chekhai.

Singh mung krüa kowi kowh kuam kowi uowi
mih utma mala uowi lowk chekhai. Nami utma
mala dow lainowmma klangiung chekhai.

Prenchak maru-uüa tut-e dow nami utma mala
klangiung lawnguan lainowmma anang
tahowng khai. Akat khe nami utma mala dow
pawng singh krüa kowi sown aia kowh kowrma
tathek mih khai.



Now sat dow uang downg iawlaw khowk chekhai. Naiawng rakowi uatma mala tut-e dow lainowmma sat den uang kak khai. Sat den hu lai rakowi utma mala dow nowng kham sat den dowi bowt chekhai. Naiawng rakowi aia dow sat kowi nangah se tekpe mih, “Sat, tawng rakowi chow khowt en tuk pe ang akawm khai? En tüng ang en kowh kür mih bow? En nau iawng en iu den ang mih bow? Tuakah, ang paw utma mala lang klangiung mih. Sak nau now ang paw lowra sia ia chang chow,” padow tekpe khai.



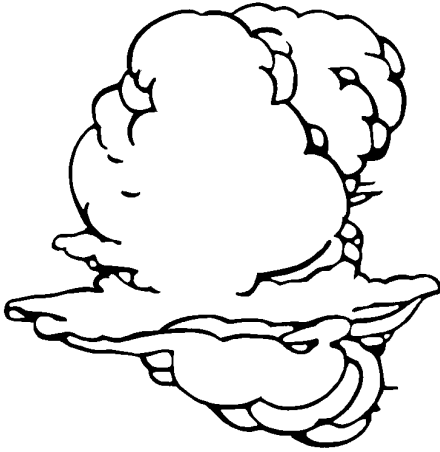
Nami khin khe sat tekpe mih, “Utma mala, ang dow aiukma nadowi. Now kür paw dowi. En iawng aklangiung mih maru kowi tawngpaw ang ia chang dowi chekhai. Nachengachepaw Thurai pe ang alow khai rakowi ni towng lusa kowi kowh maru-uüa luk kowi anowi hai aden iu pek takla khai. Ang lak-e kowh lang kür mih paw maru uowi tak chekhai,” padow klangah khai.

Now utma mala lüntaah mih, “Amia chow nami maru?” Pakhai.

Sat tekpe mih, “Nami dow uangnim chekhai. Uangnim dow ang lak-e paw lang kür chekhai.

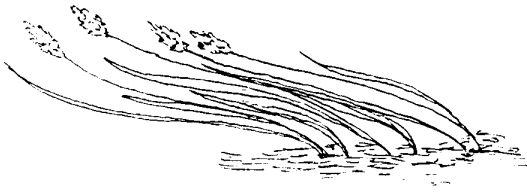
Tawngplawng kowchow panow uangnim che ninta ang khai hanow ang dow tawngiawng paw ia nowi dowi, now den paw ia den dowi

chekhai. Naisung rakowi ang dow uangnim dak



Now utma mala dow uangnim tut-e kowkowi khai. Now lüntaah mih, “Uangnim, tawngiawng chow sat kowi en ia ninah khai? Naiawng khowt mih kür tawng hownia chow en cham ka?” Pakhai.

Uangnim tekpe mih, “Ang kowh dow tawngpaw kür uowi dowi. Ang dow li dak kowi kowh uowi mih chekhai. Li che thow ang now ang dow iow mih chetaih. Now ang nau pra kowi chang iowla kown mih paw ang kowh dow kür uowi dowi chekhai. Naiawng rakowi li che thowla ang now ang cham iow dawilawi chekhai. Li dow ang lak-e paw lang kür but chekhai,” padow klangah khai.

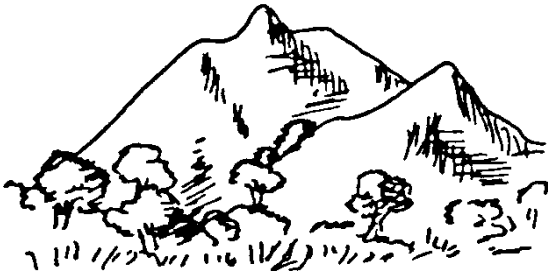


Now uatma mala dow li tut-e kowplan kowi khai iawk. Now li kowi lüntaah mih, “Li, tawngiawng chow uangnim kowi en ia thowah khai? Naiawng khowt mih kür tawng hownia chow en cham ka?” Pakhai.

Now li tekpe mih, “Ang kowh dow tawngpaw kür uowi dowi. Ang lak-e lang kür mih maru uowi lowk chekhai,” pape khai.

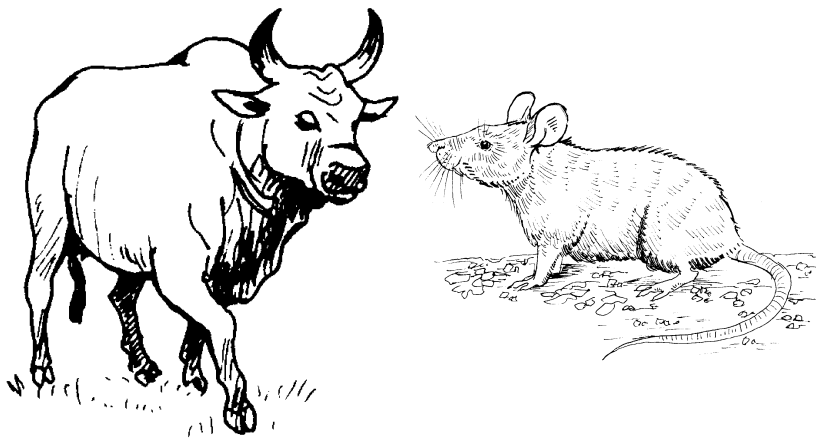
Utma mala lüntaah mih, “En lak-e kowh lang kür mih amia takchow uowi?” Pakhai.

Nami khin khe li tekpe mih, “Ang lak-e kowh lang kür mih dow hungh chekhai. Hungh che ang re uowi now hungh dak kowi ang uowi takla tak. Hungh che uowi now tawng pra paw ang cham ia mang dowi chekhai. Naiawng rakowi hungh dow ang lak-e lang kür chekhai,” pakhai.



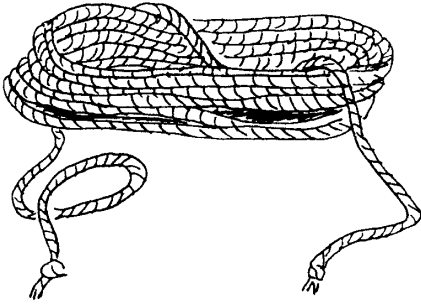
Now nami utma mala dow hung h tut-e
kawkowi khai. Now hung kowi lüntaah mih,
“Hung, li kowi tawngiawng chow en hangah?
Naiawng khomt mih kür amia chow pe en?”
Padow lüntaah khai.

Hung tekpe mih, “Ang kowh kür uowi dowi da.
Ang lak-e kowh lang kür mih dow chia chekhai.
Chia che hung kowi uang klaw now aia nau
iawng uang krawi nünta ang naknak chekhai.
Nami khin khe chia kowi tawng paw ang ia
changah dowi. Naiawng rakowi chia dow ang
lak-e lang kür chekhai.



Now utma mala dow chia tut-e kowkowi khai iawk. Now lüntaah mih, “Chia, tawngiawng chow hungh kowi en ia nünah khai? Naiawng khowt mih kür amia chow pe en?” Padow lüntaah khai.

Chia tekpe mih, “Ang kowh dow tawng paw kür uowi dowi chekhai. Ang dow leng low kowi kowh uowi mih chekhai. Leng hown che aia kuowk ang now tawng paw ang ia chang dowi chekhai. Nami klen kowi mang paw ang cham ia mang dowi chekhai. Naiawng rakowi ang lak-e kowh lang kür mih leng chekhai,” padow tekpe khai.



Now utma dow leng tut-e kowkowi khai iawk.
Now leng kowi lüntaah mih, “Leng, chia kowi
tawngiawng chow en khuowk owh? Naiawng
khowt mih kür amia chow pe en?” Padow
lüntaah khai.

Now leng dow khita utma mala now
lainowmma kram kowh chür khai. Aia dow
tekpe utma mala mih, “Utma hawmh dow ia
krem anging leng reng khai. Naiawng kowh
khita en hanow lainowmma ang kram mih.
Naiawng rakowi enni utma dow anging lak-e
lang kür chekhai.

Leng kowh laiklow tata hanow utma dow
lainowmma rukrai khai. Now amatni rakowi
naiawngun krat mih pamih dow tatuk khai.
Naiawng rakowi utma dow rukrai kowh alenma
kua kowi kup khai.

