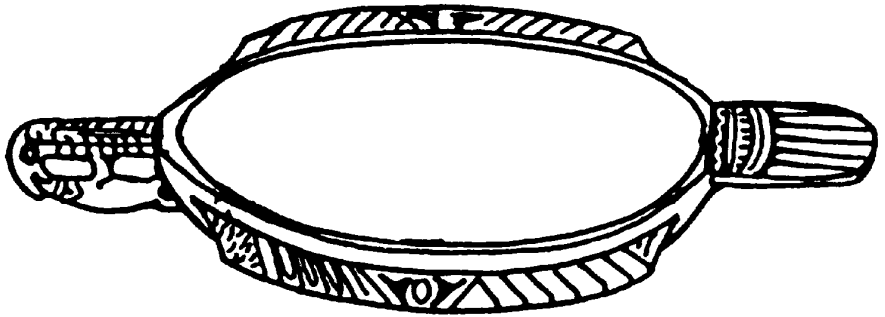


# Nimrua kim sangchia





Nimrua kim sangchia

Mru

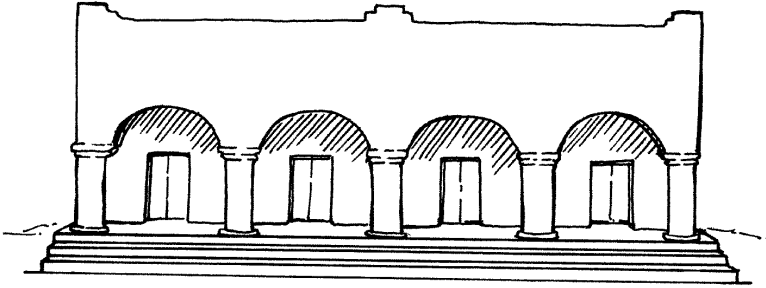


<http://creativecommons.org/licenses/by/4.0/>

You are free to make commercial use of this work. You may adapt and add to this work. You must keep the copyright and credits for authors, illustrators, etc.



Mami dow achük alai khe kowh sangchia chekhai. Nami khin khe dow natchowh mala pamih malau-uüa uowi lowkia chekhai. Nami malau-uüa dow lainowmma klangiung khai. Now aia dow nimrua hown atungma hing tata mü hüah chekhai. Now aia kowh dow nimrua kim uowi lowk chekhai.



Nami kim lak kowi dow nimrua uowi  
athawng klüing chekhai. Maru-uüa dow  
nami nimrua kim kowi kowpua reng  
chekhai. Now aria aret kowi paw  
lainowmma klangiung khai. Naiawng  
rakowi nami kim kowi dow maru tekpe  
'Natchow mala kowh nimrua kim"  
pakhai.



Now nami nimrua kim uowira hown  
atawnchow mih dow kua lowk chekhai.  
Nami kuachak maru-uüa dow apawplama  
kangowh chekhai. Now sang cha mih  
maru paw lowkia chow khowm uowi dowi  
chekhai. Nami klen kowi tawnguat iung  
ün paw amia paw tawng dowi chekhai.  
Nami dow amatni kua aching chow hown  
kowh lang uowi mih chekhai.



Now nami kuachak pungma dawng kowi lang chanlai mih ngeu-uüa uowi pre ia chekhai. Nami preia mih dow akeng kuachakuüa tawngchow own mih, pren kowi tawngchow own mih tawng paw satang reng chekhai. Now amatchi dow amatni kua ria re kowh natchow mala nimrua kim lawnguan paw tawi ta khai.



Nachenganchepaw amatni kuachakuüa mia iawng mih maru paw nami nimrua kim kowi kowtawi dowi tak chekhai. Now nimrua pamih kim dow tawngiawng chow, lak kowi tawng ngaichow uowi mih amia paw tuk dowi chekhai. Now nimrua lawnguan kowi paw tawng paw tuk büah dowi tak chekhai.

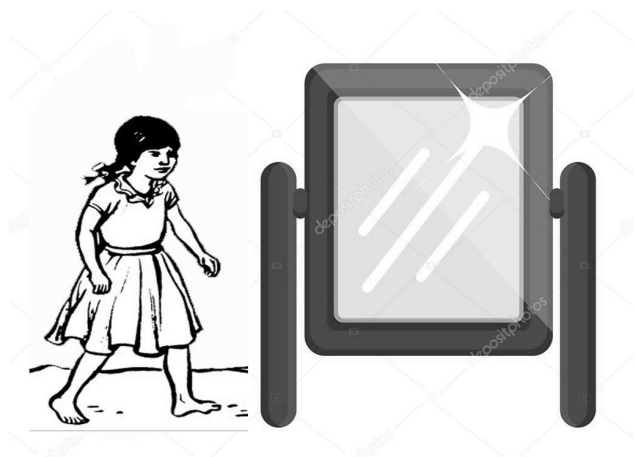


Now nami ngeu-uüa  
preia dow nakow mü  
natchow mala nimrua  
kim kownkow tarü iüah  
khai bowt. Now mang  
mang now nami  
nimrua kim re kowting  
khai bowt.



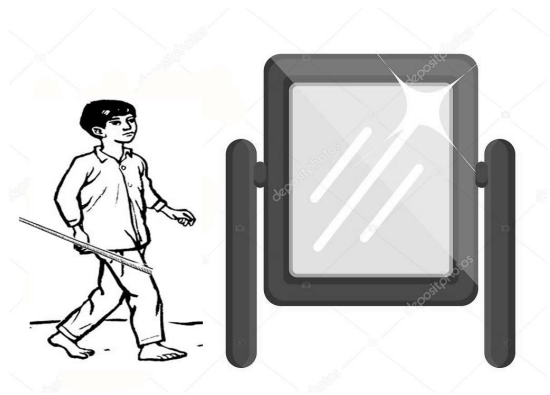
Amatchi dow nami nimrua kim ria ret  
chimsai mih kowkhita hanow lainowmma  
awda iüah khai. Now amatchi dow nami  
kim lai kowi nakow kup kown mih uam  
kup iüah dowi chekhai. Now lowk kow  
lowk tanüa khai. Naiawng hai masiuüa  
chah dow nakow rik kup kown nau mih  
nauta khai. Nachenganchepaw aia dow  
kram ring tahowma chekhai.

Naiawng rakowi masiuüa chah dow patawm kram hown nimrua kim kowi kowkup khai. Now kowkup hown akrowksang nami masiuüa chah lainowmma awda khai. Aia dow nami nimrua kim lak pakimma kowi aia powm kangowh iawng mih uowi akawmma mih khi khai. Naiawngün dow aia chang powm iawng tawi chang khai. Naiawng hai patawm pah awda aia dow uang lawt khai bowt. Naiawngün dow nimrua kowi kowh aia matia powm pami hing tuk dowi chekhai.



Now uang lawt hanow kim lak kowi paw  
aia powmiawng masiuüa chah uowi  
akawmma mih lawnguan uang lawp pe  
khai. Nami tata hanow kachakuüa chah  
dow lainowmma awda khai. Now kram  
saktuak paw uang ting khai. Naiawng  
rakowi nami kachakuüa dow kram kowh  
krawi chamla müa lowk khai. Now aia  
dow maru-uüa hawt senah chepaw müa  
hown dow nowngia sen kown taih pamih  
tatuak khai.





Now nami kachakuüa dow nimrua kim lak kowi kowkup hown akrowsang aia powm iawng müa dowkma kangowh mih khi maru akawmma khai. Naiawng rakowi aia dow lainowmma kram khai. Now kram kowh ling tui towk prang chekhai. Now aia dow kung pra pur pra krawi mü hanow uang bawp aia mih iawng kangowh chekhai. Naiawng rakowi aia dow alenma uang lawt khai. Nami kachakuüa paw naiawngün müa dowkma mih maru dow nimrua kowi kowh aia powm pami hing katuak dowi chekahi.



